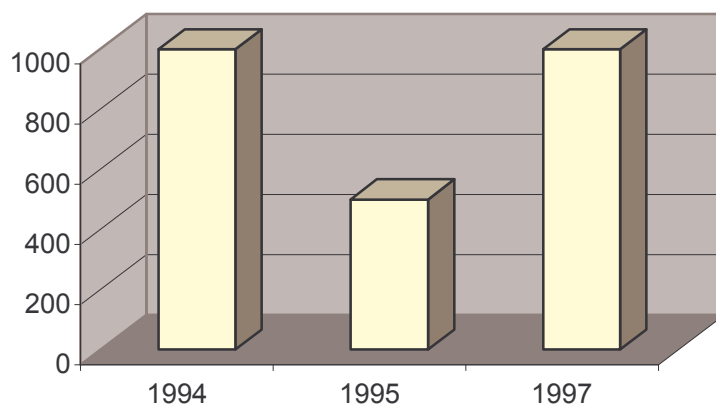


Analisi biologica del percolato nella vasca della discarica

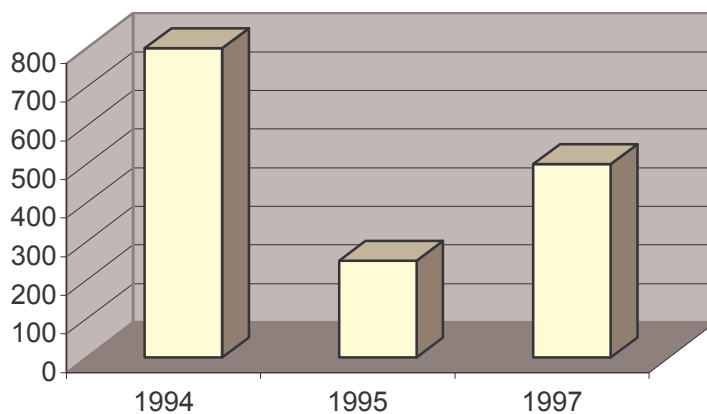
parametro: **Coliformi totali in 100 ml**

1994	1000
1995	500
1997	1000



parametro: **Coliformi fecali in 100 ml**

1994	800
1995	250
1997	500



parametro: **Streptococchi fecali in 100 ml**

1994	400
1995	50
1997	200

