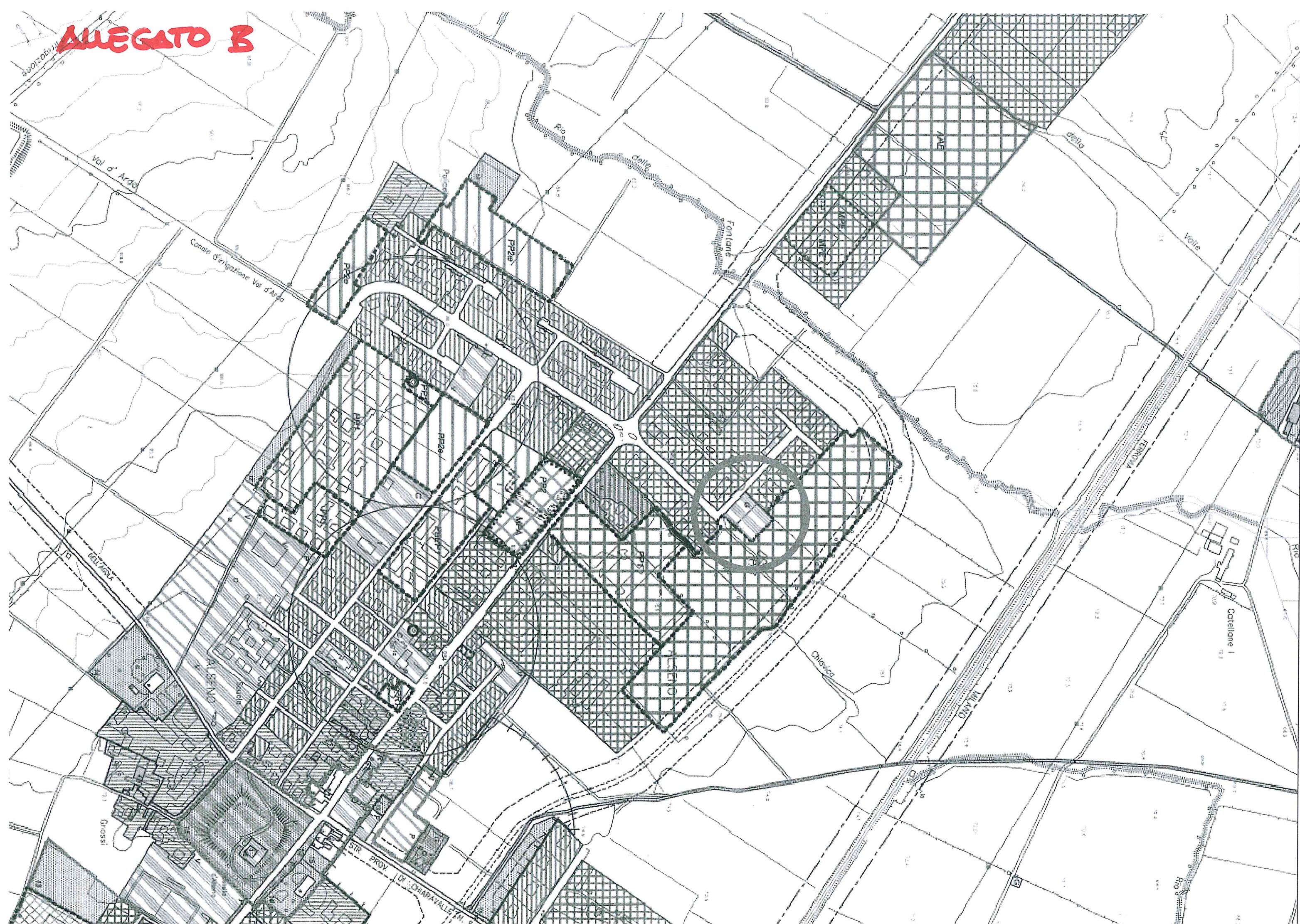
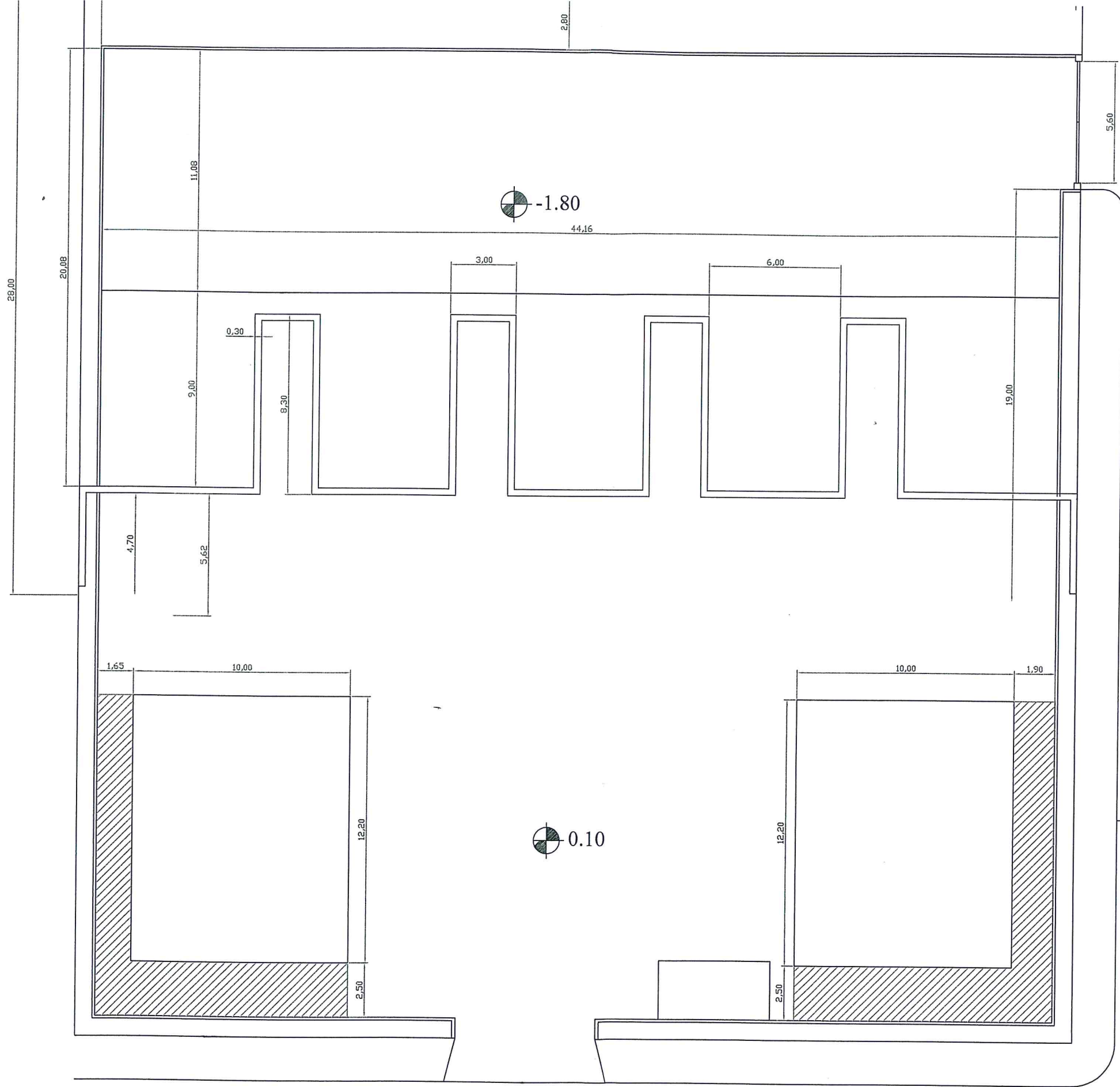


ALLEGATO B





Via Galilei

Marconi

siepe sempre verde
tipo "Leylandii"
altezza 2,5 - 3,0 mt.

cancello mezzi
di servizio

piattaforma in cls.
8 cassoni multilift

⊕ -1.80

tettoia per contenitori
batterie, oli esausti
e apparati elettronici
e frigoriferi

vasca per
vegetale
H. 1,70 mt.

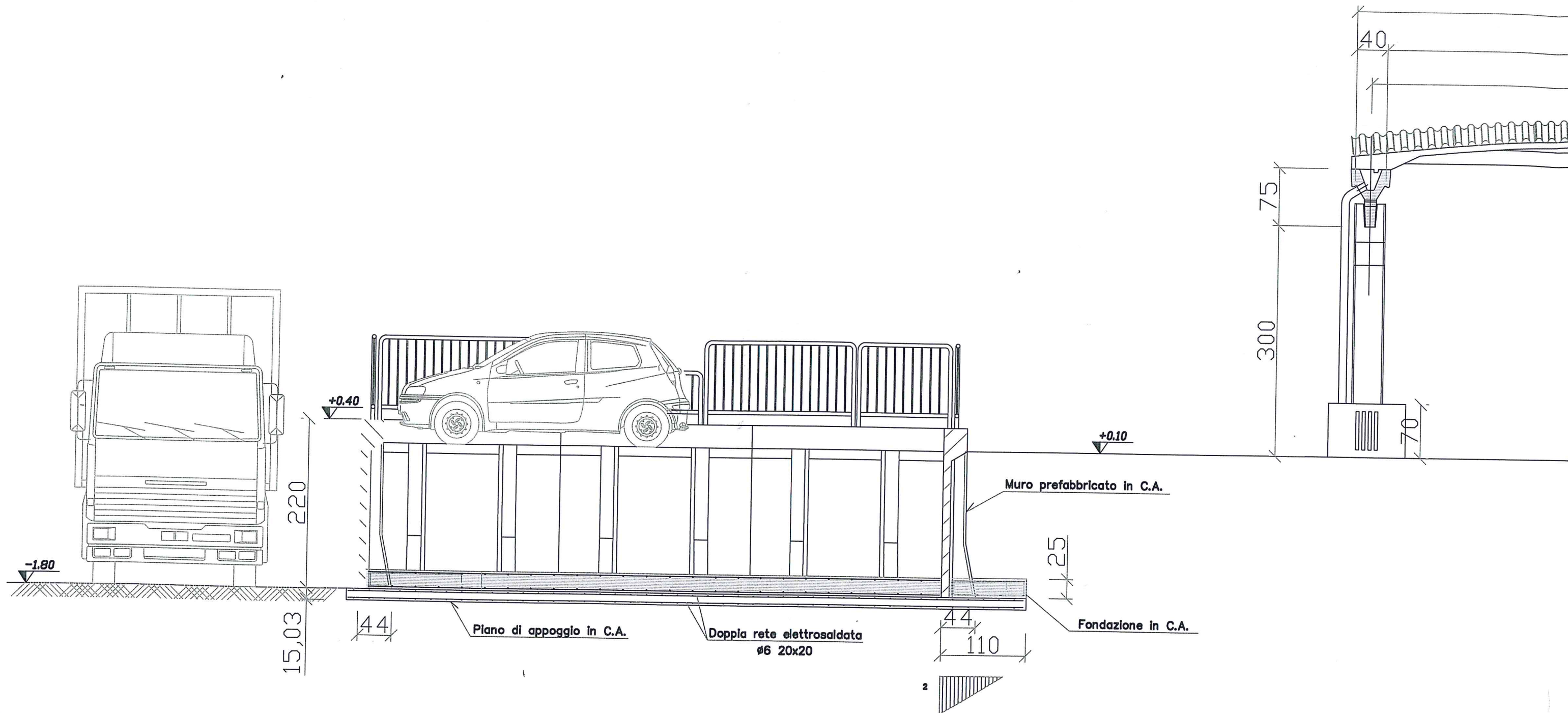
⊕ 0.10

ampliamento
solette
in cls.

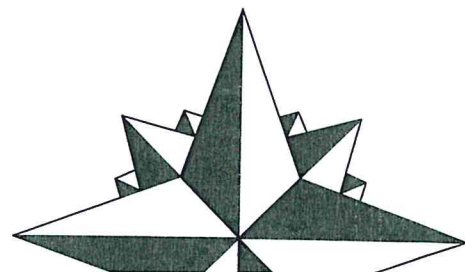
⊕ 0.00

Via Galilei

Marconi



NORD



SEZIONE "B-B"

Scala 1:50

